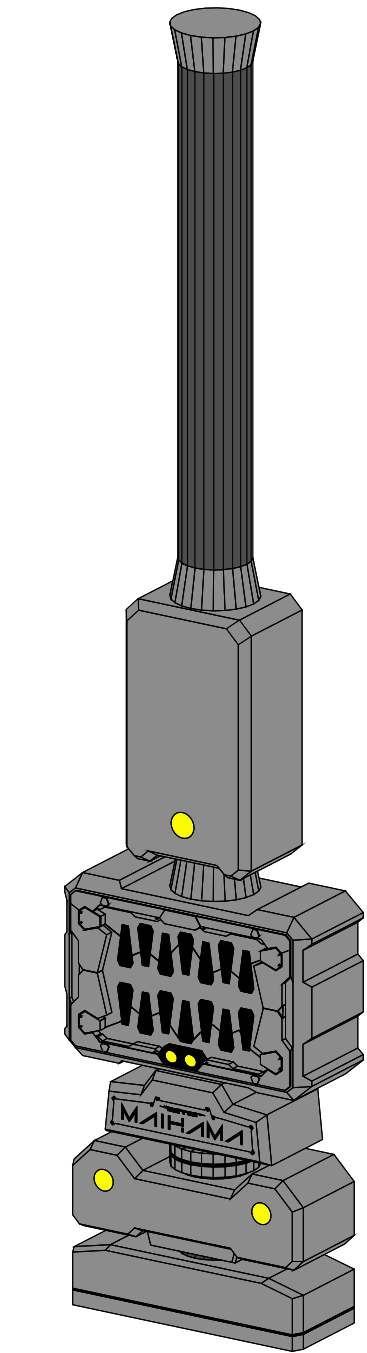
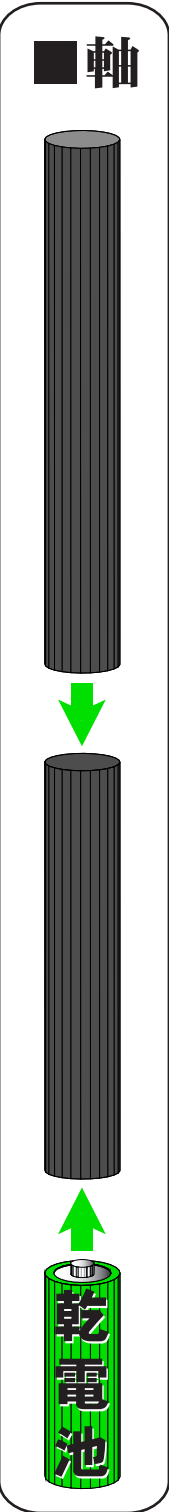
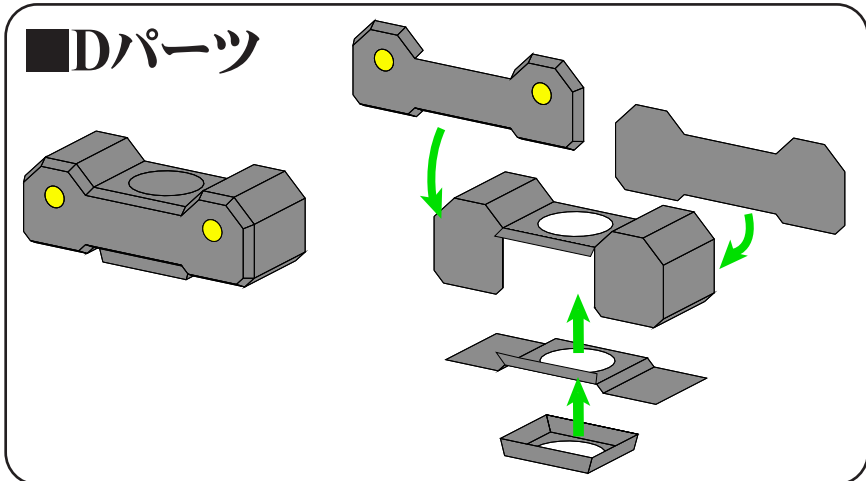
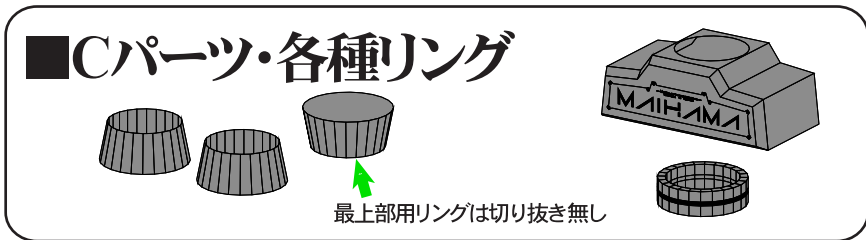
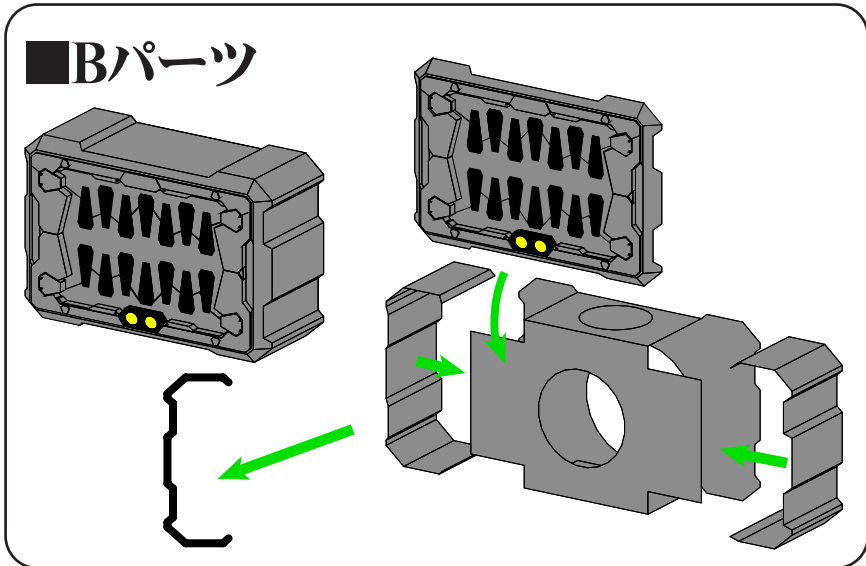
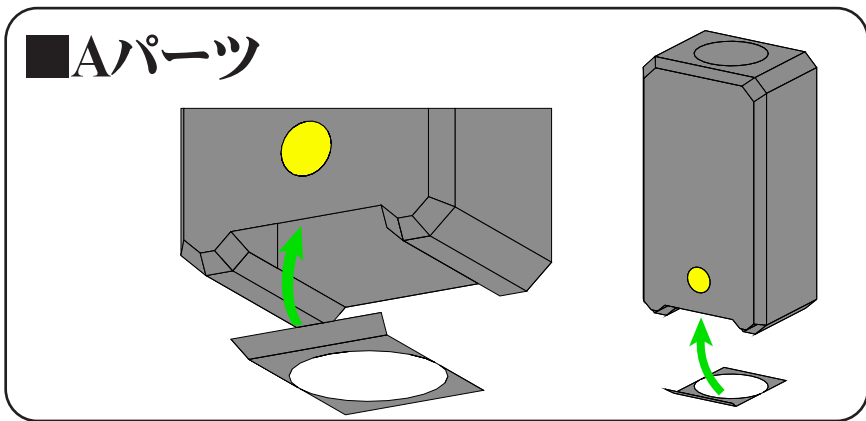


MAIHAMA
舞浜サーバー
ペーパークラフト
(C)ZEGAZEGA 2011/8/31 [Not For Sale]

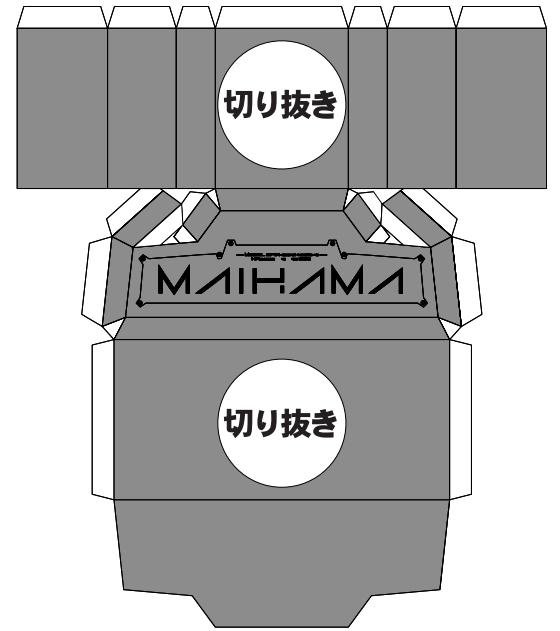
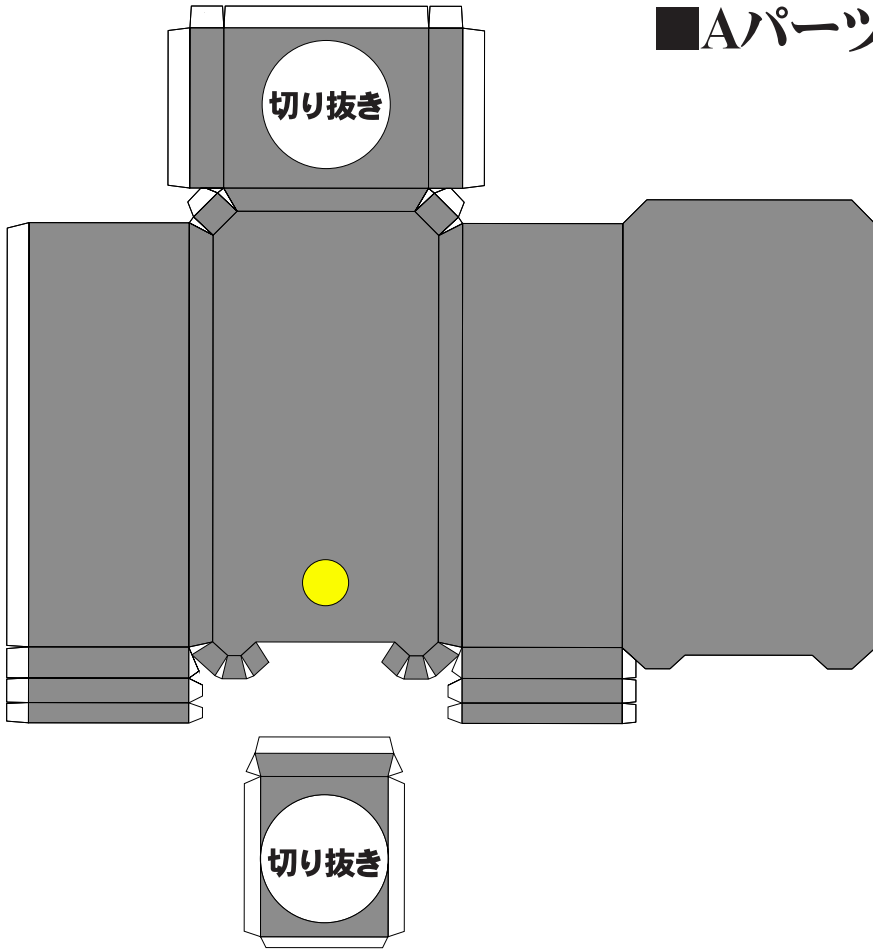
※この説明書ではノリシロは端折っています。
※接着の際は爪楊枝の先に木工用ボンドを少量ずつ付けて塗るのがオヌヌメです。



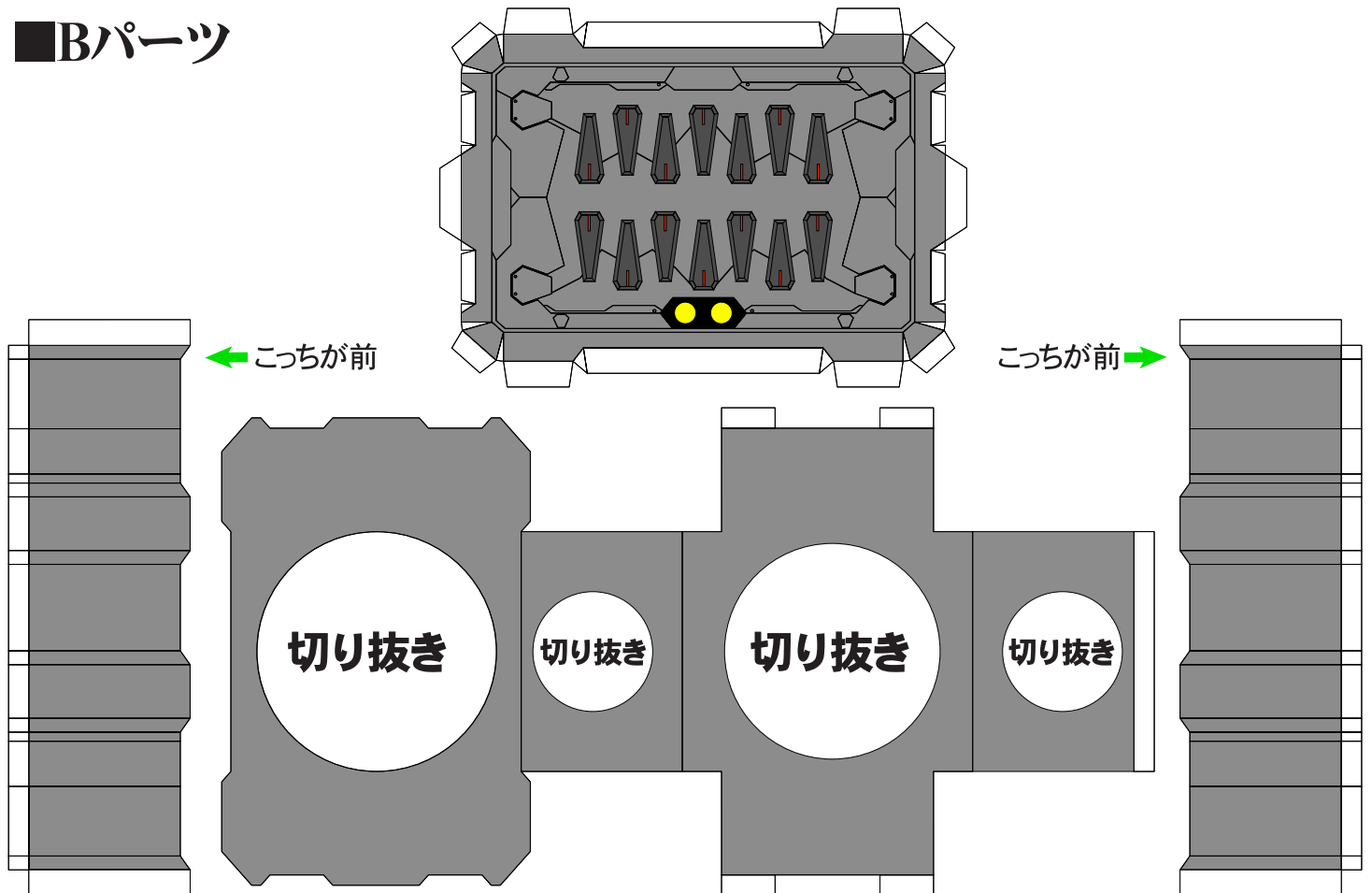
COMPLETE!!

■Aパーツ

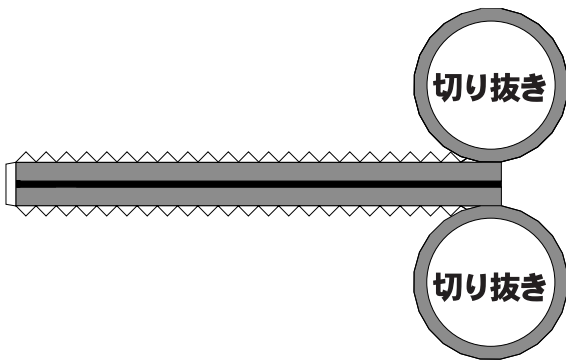
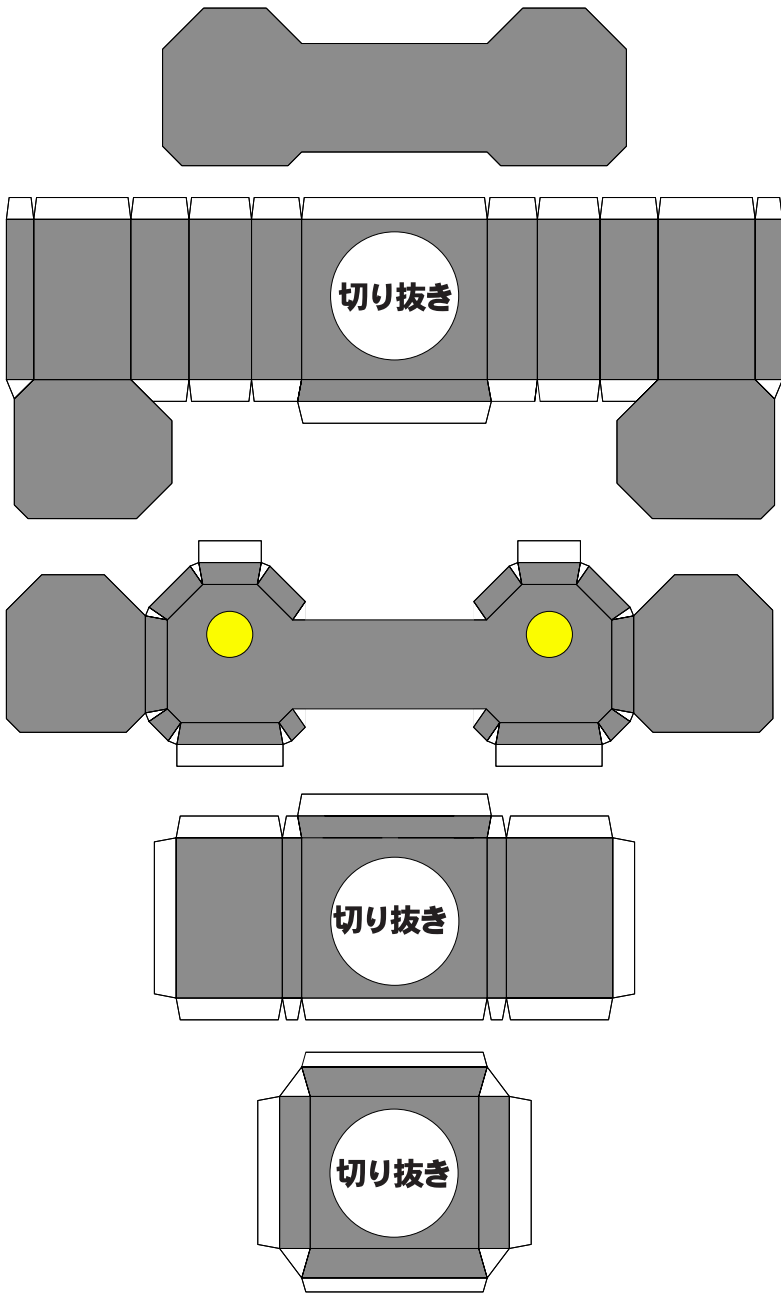
■Cパーツ



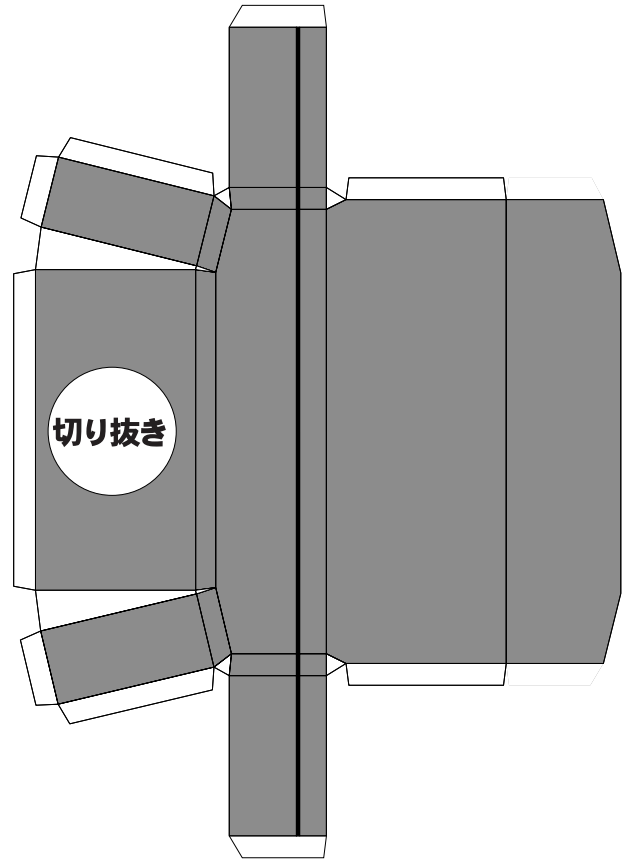
■Bパーツ



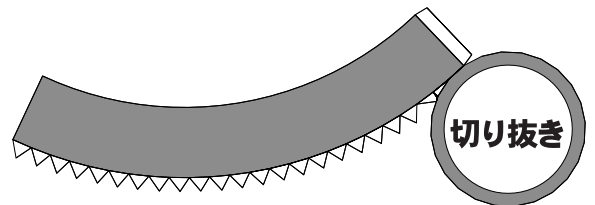
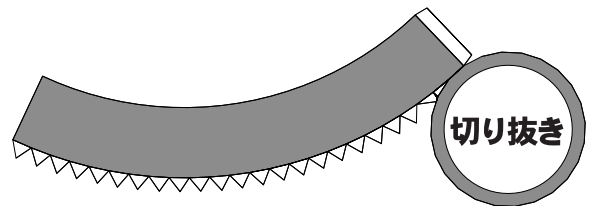
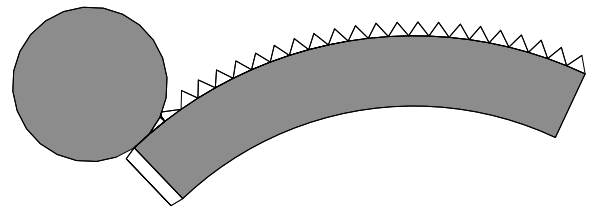
■Dパーツ



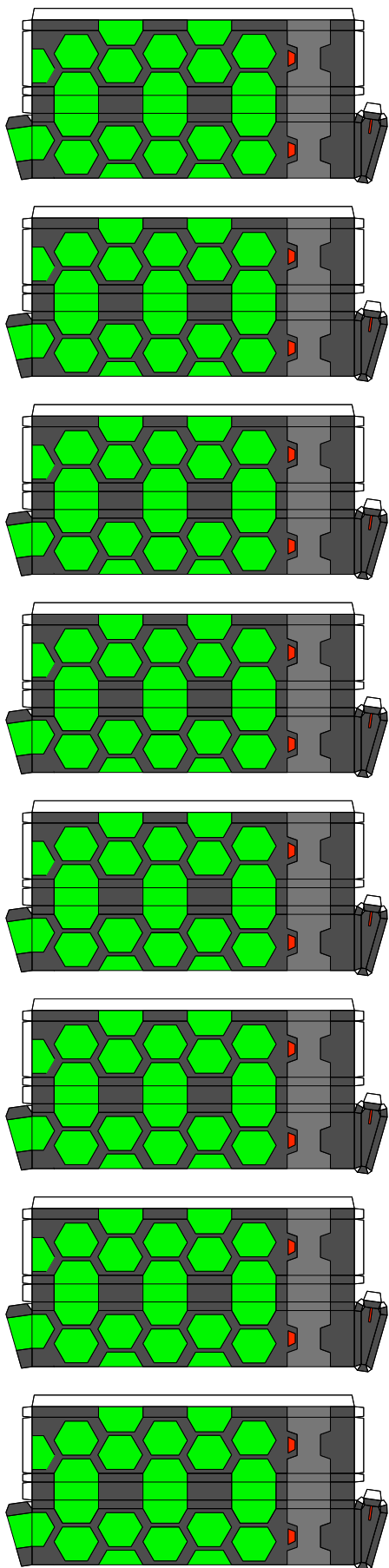
■Eパーツ



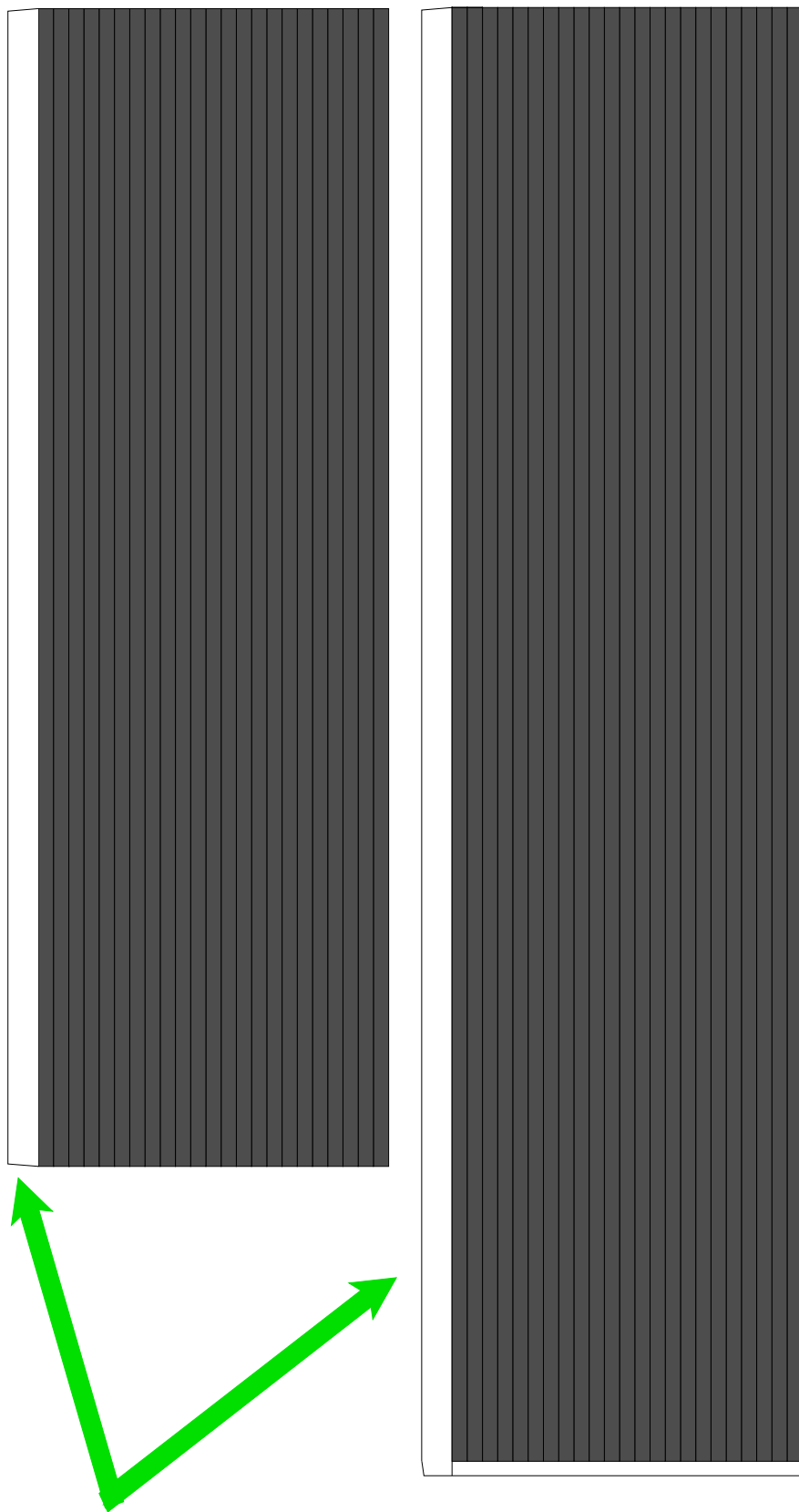
■各種リング



■ホロメモリいっぱいw



■軸パーツ (短くしてもOK)



ここは接着しないのをオススメ。
パーツがキツくて入らなかったり、ユルユルだったりするので。