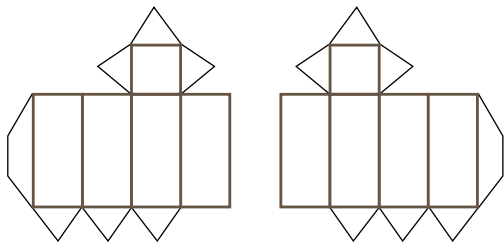


ペーパーげんたい!  
カミナギ・リョーコ

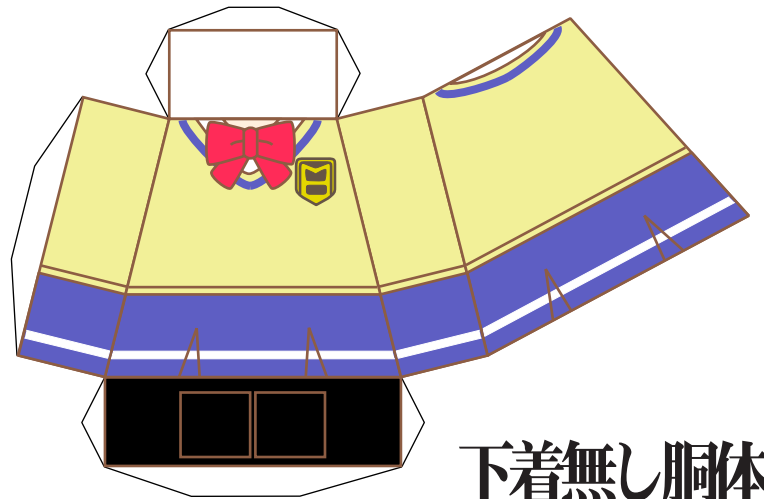


ペーパークラフト

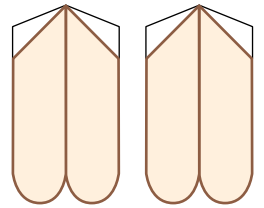
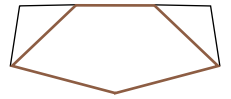
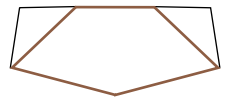
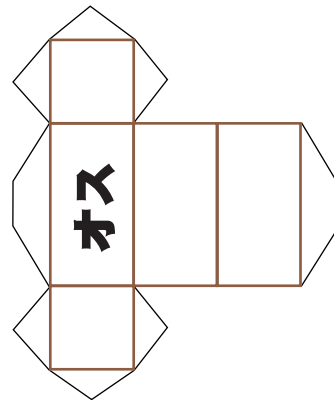
(C)ZEGAZEGA 2011/8/31 [Not For Sale]



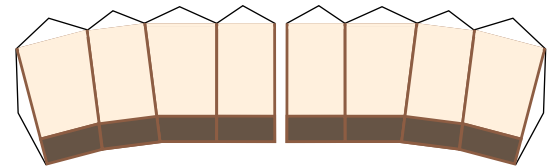
げんたいSTAGE



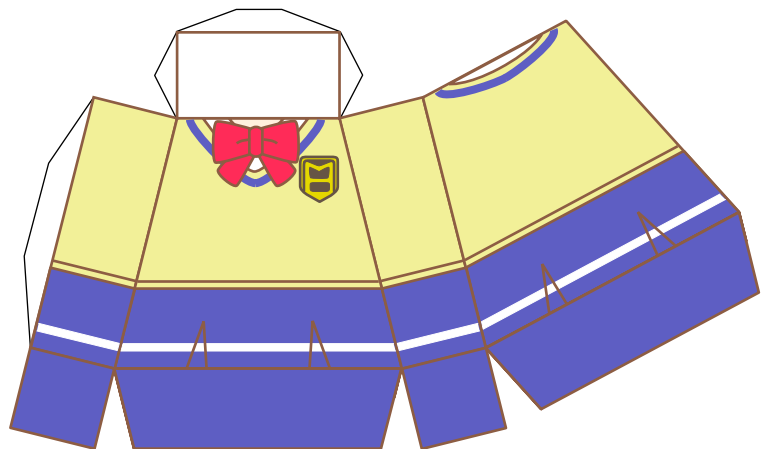
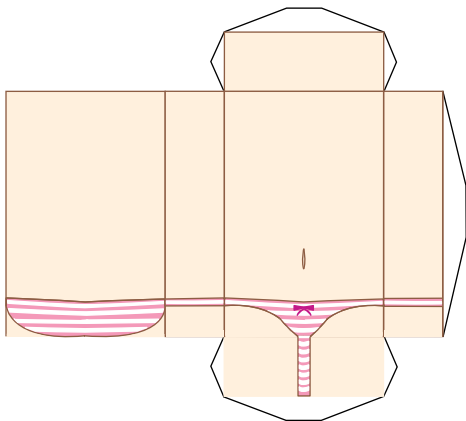
下着無し胴体

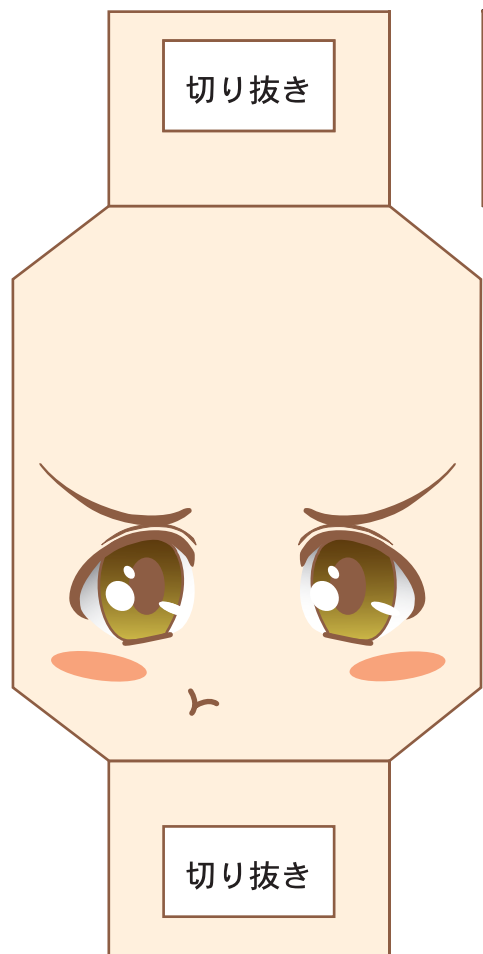
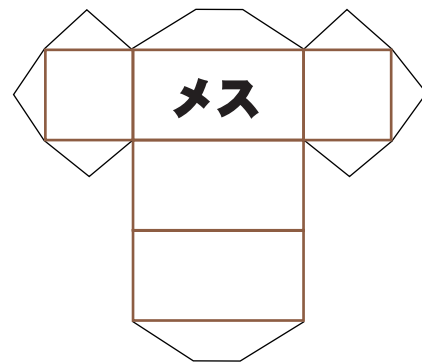
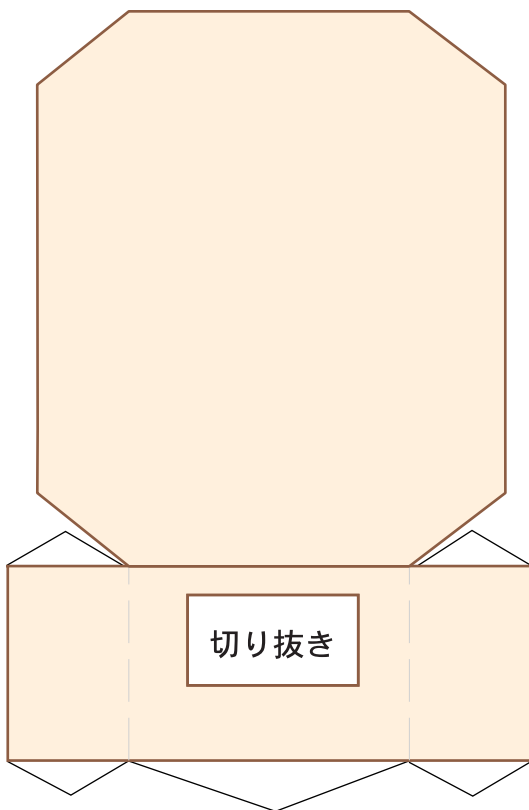
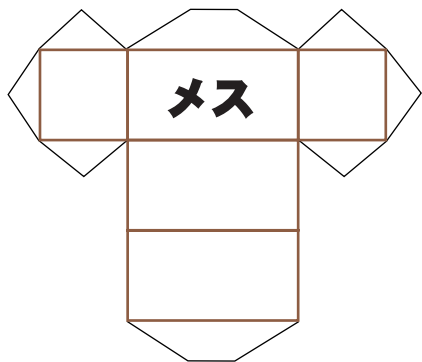


共用パーツ  
(胴を選択して組立)

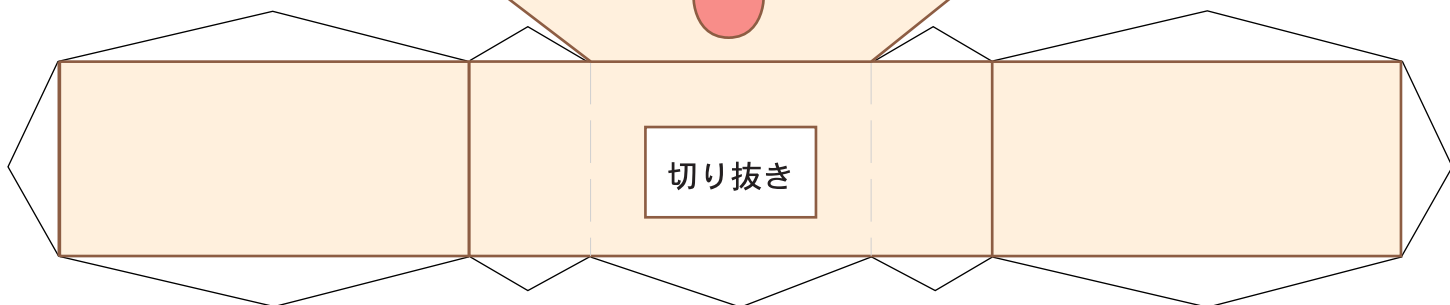


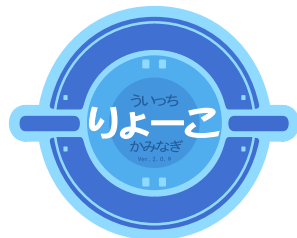
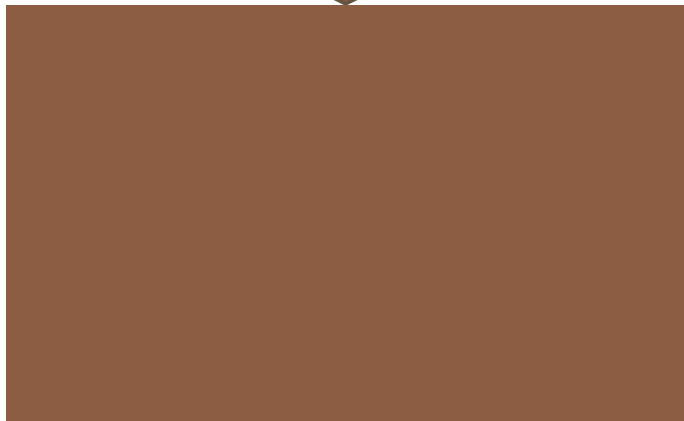
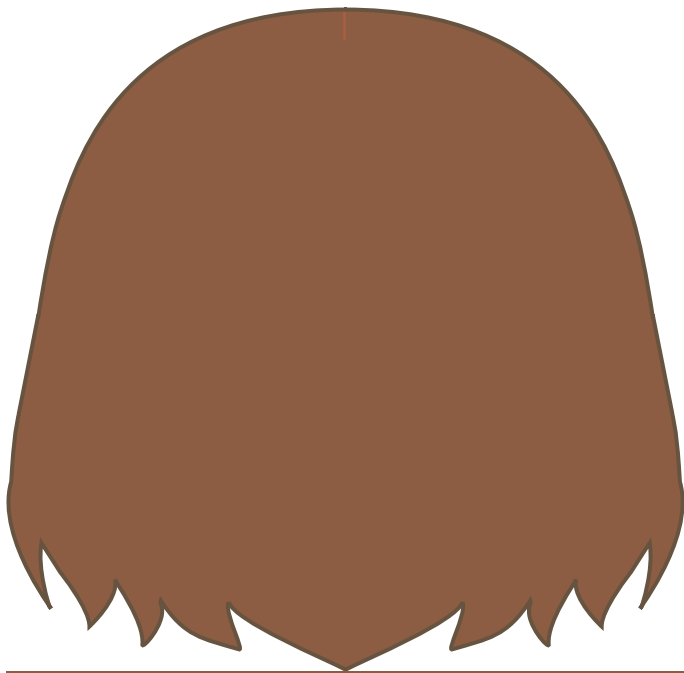
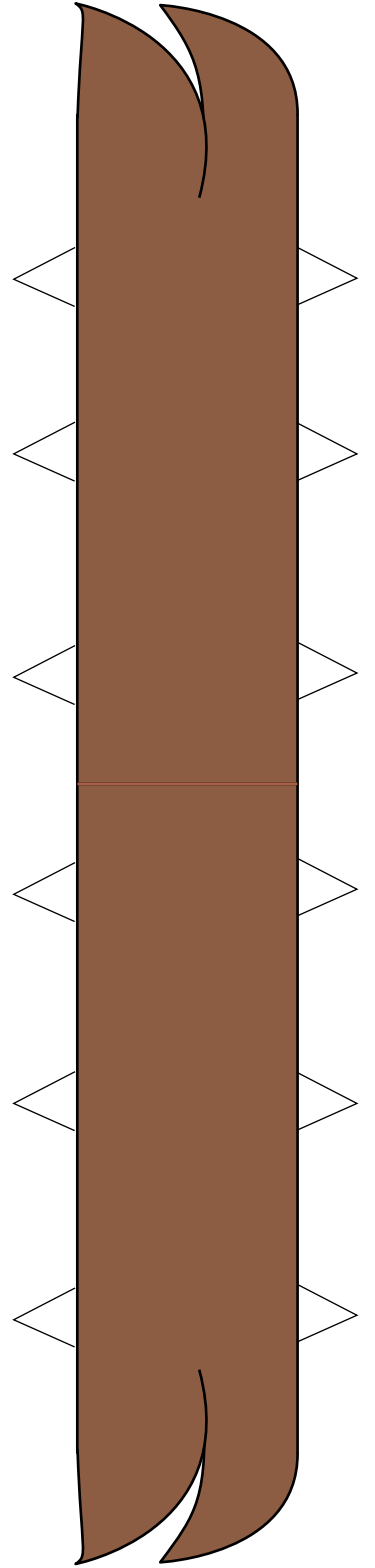
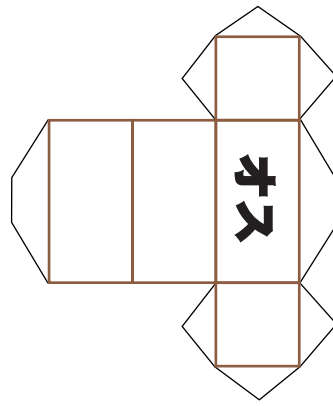
下着有り胴体



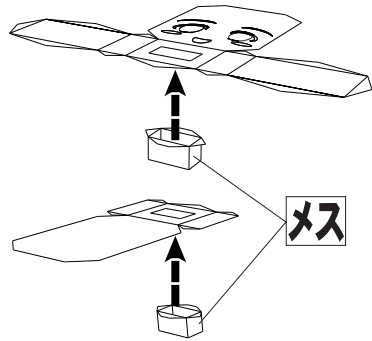


かぶせるだけ  
表情パーツ

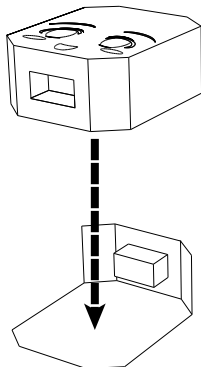




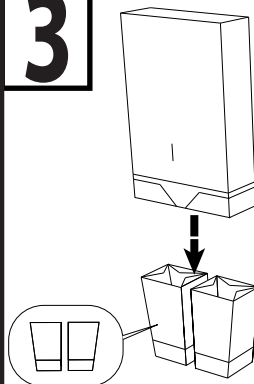
**1** 顔パーツにジョイントを仕込む



**2** 顔パーツ組み立て

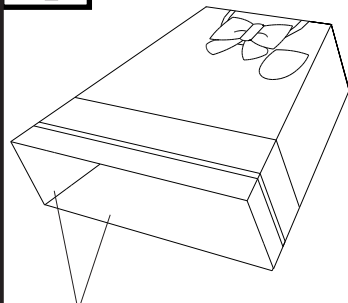


**3**



接着時、足の方向に注意

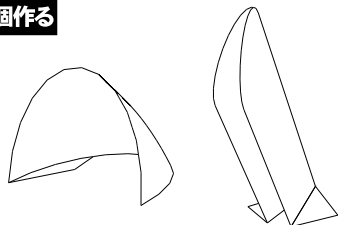
**4**



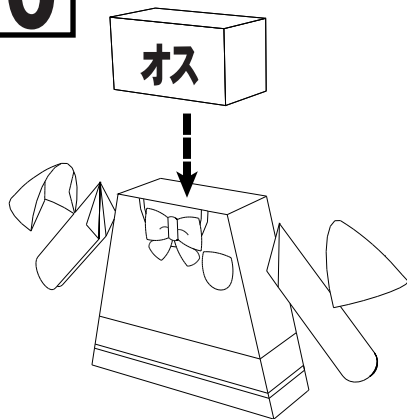
スカート裏地は最後に接着

**5** ソデと腕を折り曲げる

**×2**  
2個作る

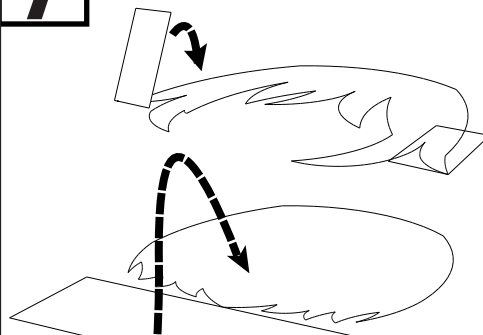


**6**



**7**

髪の毛ウラ面に裏地を折り返し接着



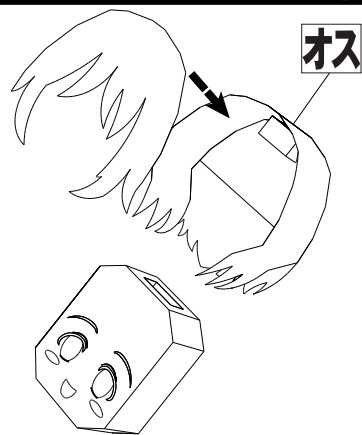
※不要部分はカット

**8** 側面部の貼り付け



※内側に丸く折り込む

**9**



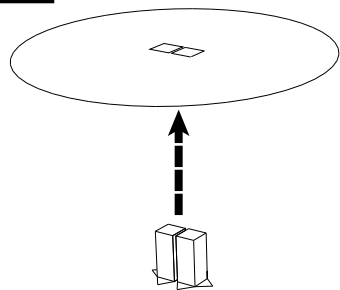
※ジョイントは顔パーツとしっかり位置をあわせる

**10**



※わけがわからないよ

**11** げんたいSTAGE



下から通して接着する

**12**



**13**



キョーちゃん!!

表情パーツを替えたりして  
好きにあそびたまえ